

# Stipiti impiallacciati Imperial per porte scorrevoli a scomparsa - Bino's

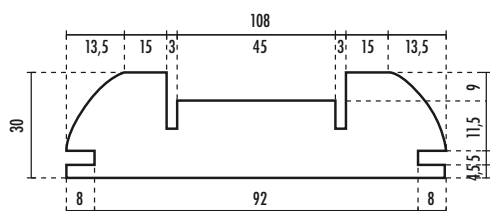
## Bino's Imperial per intonaco - monoanta

LARGHEZZA "LUCE MAX"	ALTEZZA "LUCE MAX"	SPESORE MURO	CODICE ARTICOLO
1050	2100	108	8176
1050	2100	125	14550
1050	2100	150	14442

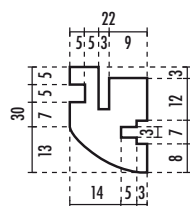
**Il kit comprende:** 1 montante battuta, 2 montanti telaio, 1 profilo architrave, 3 spazzolini antipolvere nero, 2 guarnizioni di battuta marrone, 3 staffe fissaggio montante battuta



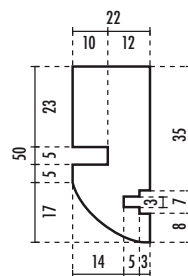
### Bino's Imperial per intonaco - mm. 108



**A**  
montante battuta

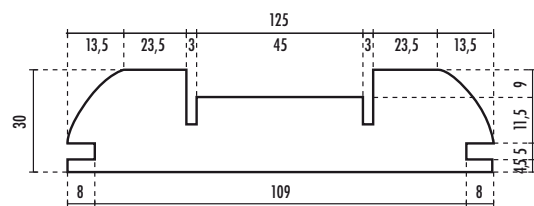


**B**  
montante telaio

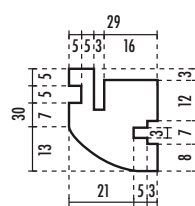


**C**  
profilo architrave

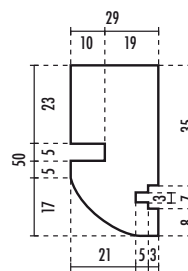
### Bino's Imperial per intonaco - mm. 125



**A**  
montante battuta

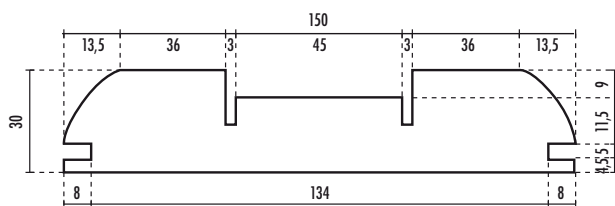


**B**  
montante telaio

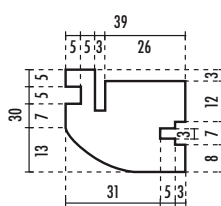


**C**  
profilo architrave

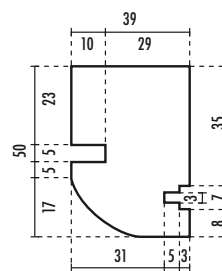
### Bino's Imperial per intonaco - mm. 150



**A**  
montante battuta



**B**  
montante telaio



**C**  
profilo architrave